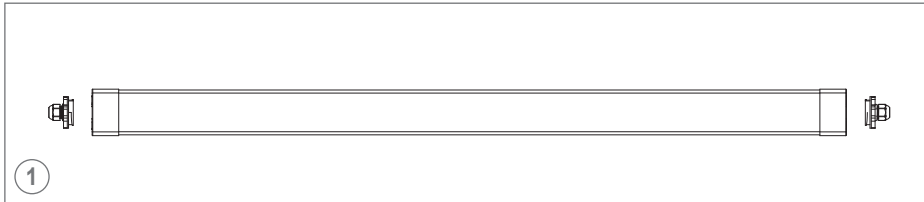
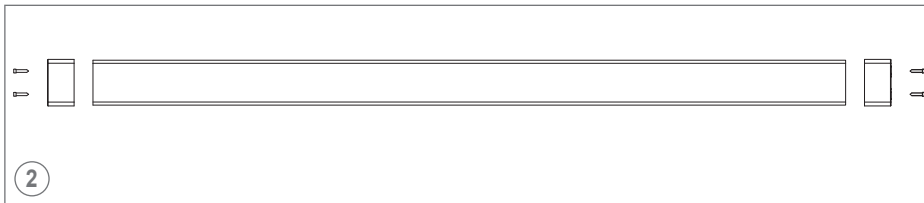


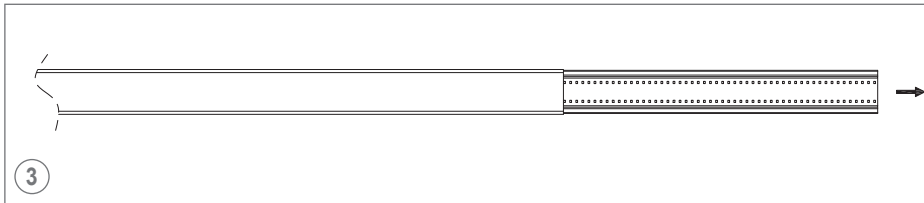
## Instruction for Light Source Disassembly



Twist and remove the waterproof cover from both sides of the fixture.



Remove the screws from both sides.



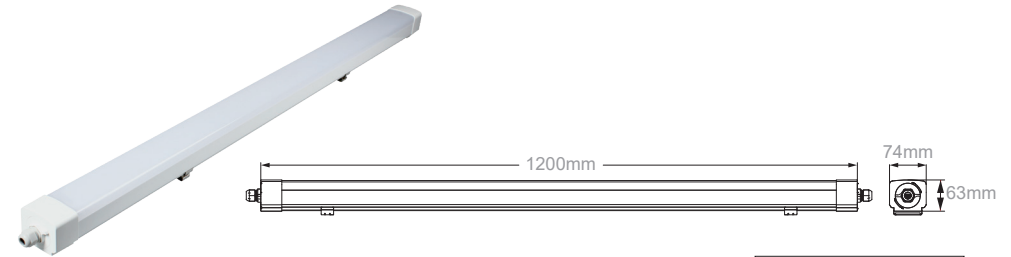
Pull out the PCBA (light source).

\* This product contains a light source of energy efficiency class <D>

## OPERATING MANUAL

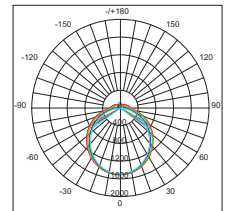
### Atlas A1200 - Basic on/off

Important: Please read the instruction manual carefully prior to installation and keep it for future reference.



Order Code	Product Series	Power	Function Description
A1200 38 000	Atlas A1200	38W	Basic on/off

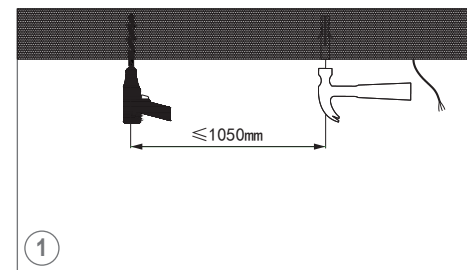
Mounting: Wall or Ceiling  
Light features:  
Ra: >80  
Life Time: 5 years  
Light Source: LED SMD2835  
Input: 100V-277V 50/60Hz



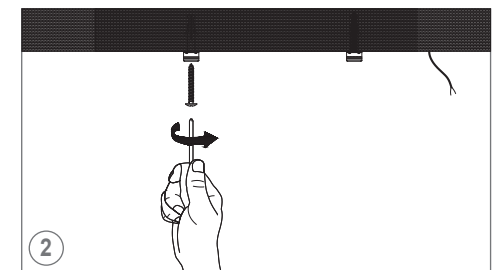
#### Accessories

No.	Pic	Qty.	Usage
1		4	Fix bracket
2		4	Rawl plug
3		2	Bracket: fasten fixture
4		1	Water-proof lid

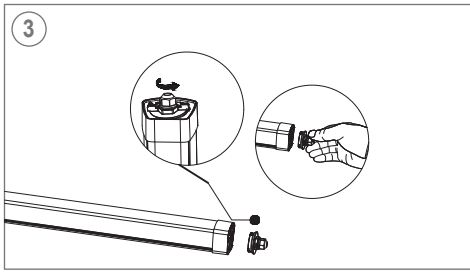
#### Installation



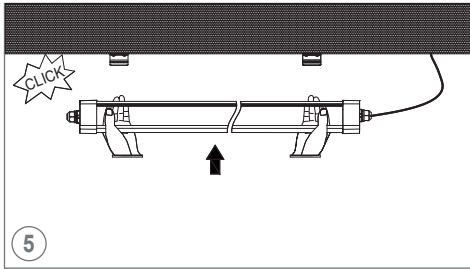
Knock the rawl plugs into the pre-drilled hole of surface.



Install the brackets.

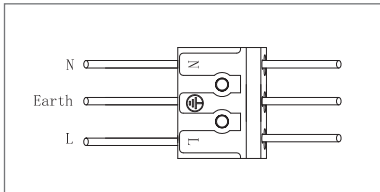


Remove the waterproof gland.



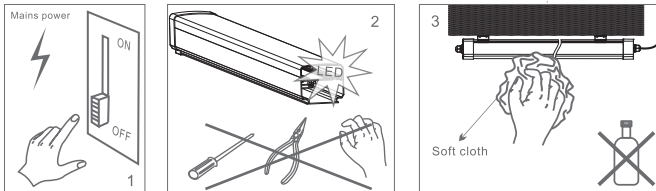
Fasten the luminaire on the brackets.

### Wiring

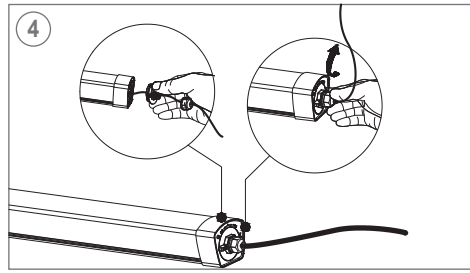


### Maintenance

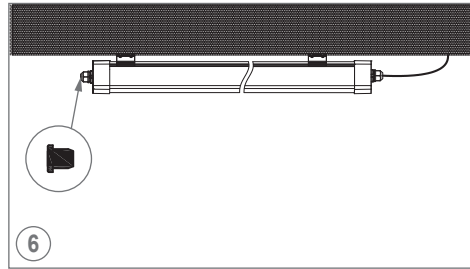
1. Cut off the main power first.
2. Don't touch LEDs while maintaining or cleaning.
3. Don't use chemicals to clean the fixture.



Environmental protection: waste electrical products should not be disposed of with household waste. Please recycle where facilities exist. Check with your local authority or retailer for recycling advice.



Cut off the power, Connect the wire referring to the wiring diagram.



If wiring only from one side, the other side should be installed with the waterproof gland and make sure it is fasten.

### Caution

1. The product must be installed by professional technicians and power supply must be cut off before installation.
2. The diameter for AC input wire is 0.75mm<sup>2</sup> (complying with 60245 IEC57), which complies with the latest IEE electrical standards or national standards.
3. Do not touch the electronic circuit and its components.
4. Contact an authorised technical service centre for any repairs possibly required use only original spare parts.
5. Do not touch LED while installing or maintaining.
6. Sealing the entrance hole with glue after install is needed.
7. The light source contained in this luminaire shall only be replaced by the manufacturer or his service agent or a similar qualified person.

